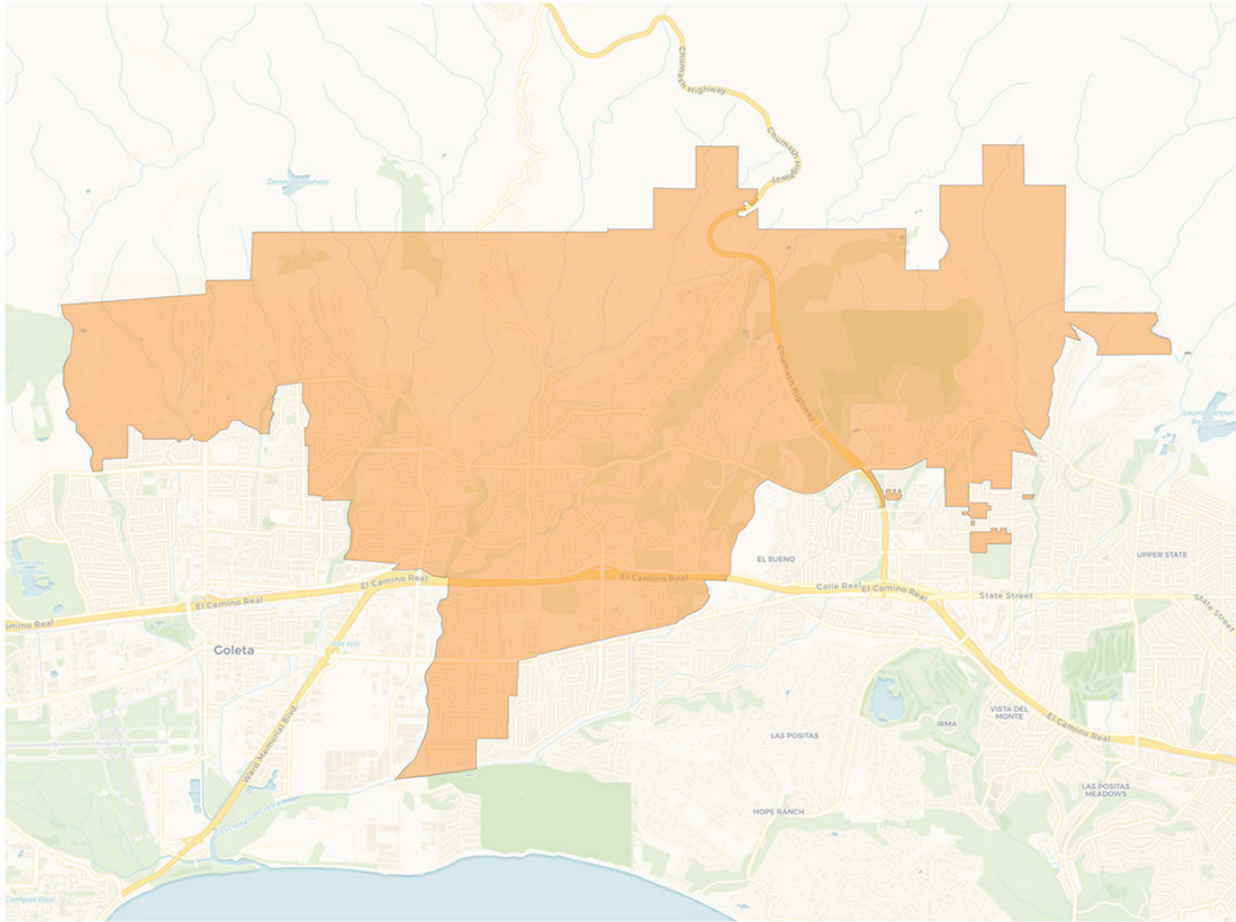
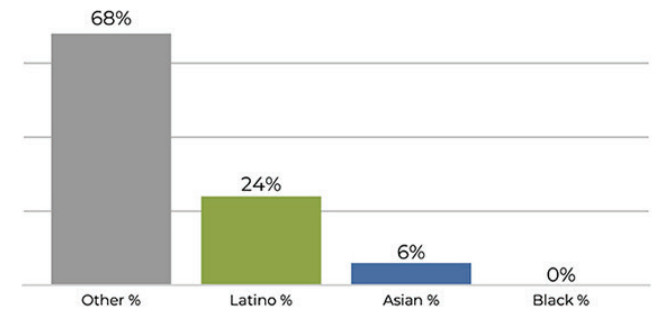
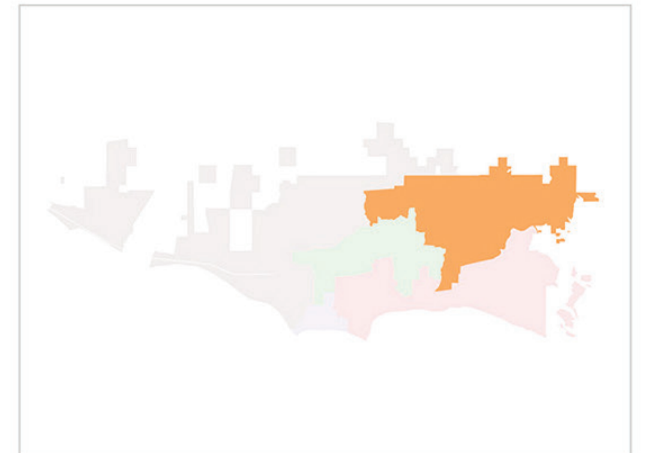
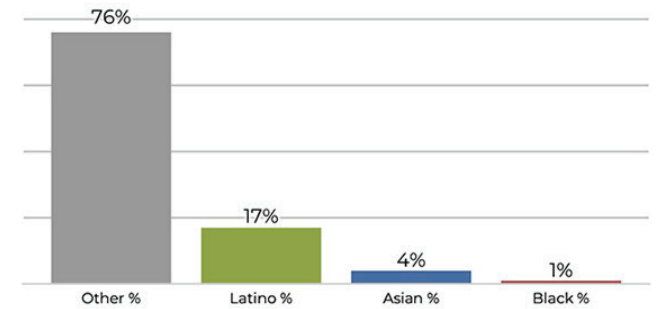


2020 Census

	1	2	3	4	5
Population	18,391	17,140	18,571	18,006	17,279
Deviation	514	-737	694	129	-598
Deviation %	2.9%	-4.1%	3.9%	0.7%	-3.3%
Other	12,561	8,871	9,989	9,304	9,060
Other %	68.3%	51.8%	53.8%	51.7%	52.4%
Latino	4,471	5,925	4,054	5,308	6,055
Latino %	24.3%	34.6%	21.8%	29.5%	35.0%
Asian	1,223	2,101	4,310	3,090	1,908
Asian %	6.6%	12.3%	23.2%	17.2%	11.0%
Black	136	243	218	304	256
Black %	0.7%	1.4%	1.2%	1.7%	1.5%

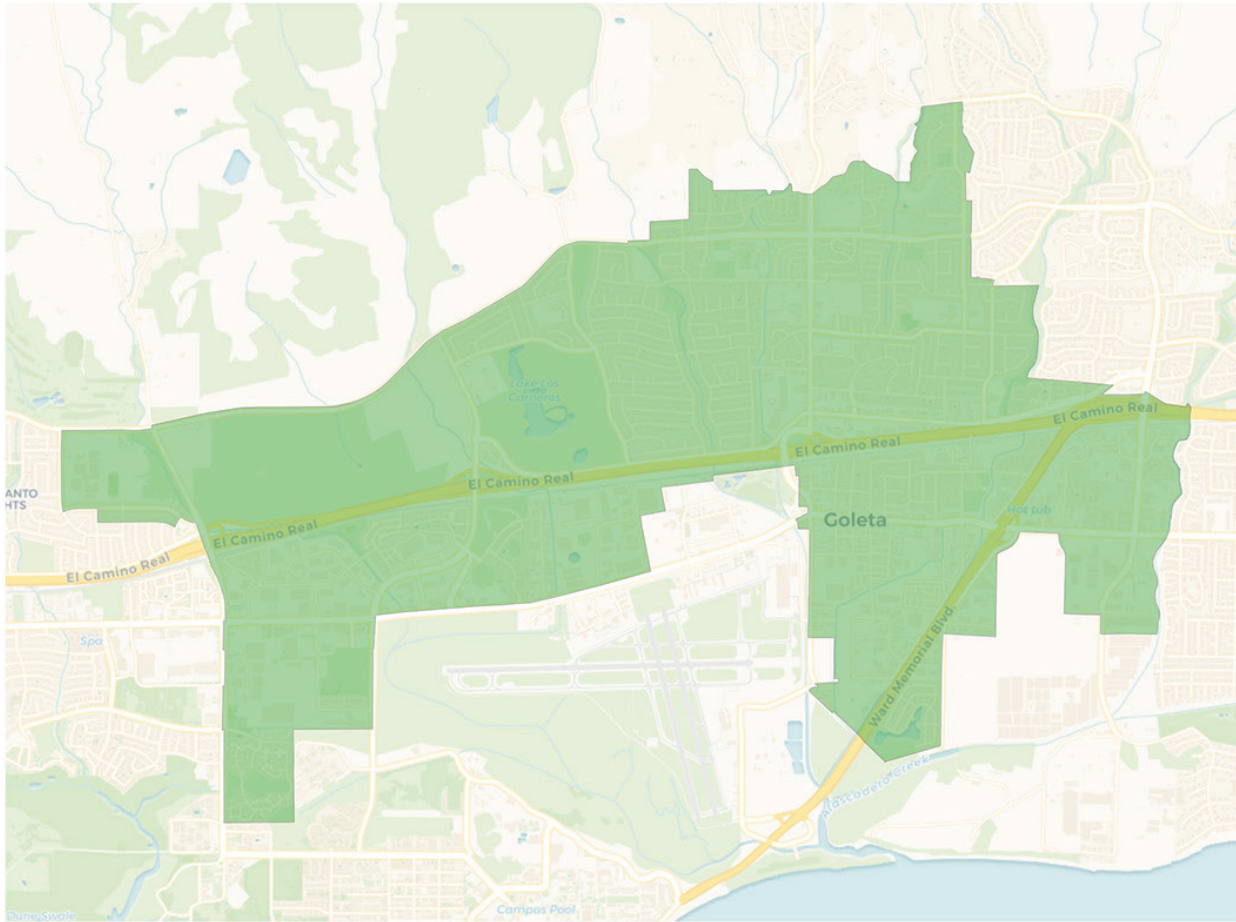
Citizen Voting Age Population (CVAP)

	1	2	3	4	5
Total CVAP	13,968	10,510	15,493	15,562	11,142
Other CVAP	10,657	6,719	9,583	9,665	7,352
Other CVAP %	76.3%	63.9%	61.9%	62.1%	66.0%
Latino CVAP	2,458	2,413	3,423	3,591	2,881
Latino CVAP %	17.6%	23.0%	22.1%	23.1%	25.9%
Asian CVAP	616	919	2,182	1,616	636
Asian CVAP %	4.4%	8.7%	14.1%	10.4%	5.7%
Black CVAP	237	459	305	690	273
Black CVAP %	1.7%	4.4%	2.0%	4.4%	2.5%

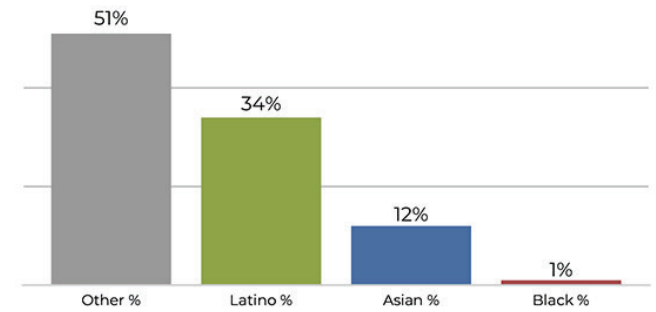
District 1

2020 Census

Citizen Voting Age Population


Population	Deviation	Deviation %	Other	Other %	Latino	Latino %	Asian	Asian %	Black	Black %
18,391	514	2.9%	12,561	68.3%	4,471	24.3%	1,223	6.6%	136	0.7%
Total CVAP	Other CVAP	Other CVAP %	Latino CVAP	Latino CVAP %	Asian CVAP	Asian CVAP %	Black CVAP	Black CVAP %		
13,968	10,657	76.3%	2,458	17.6%	616	4.4%	237	1.7%		

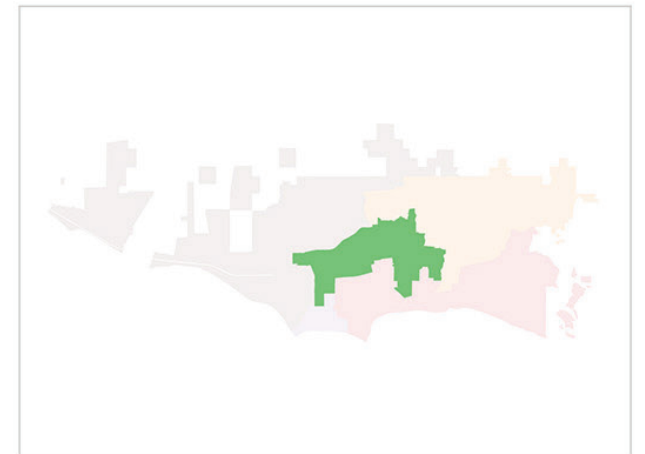
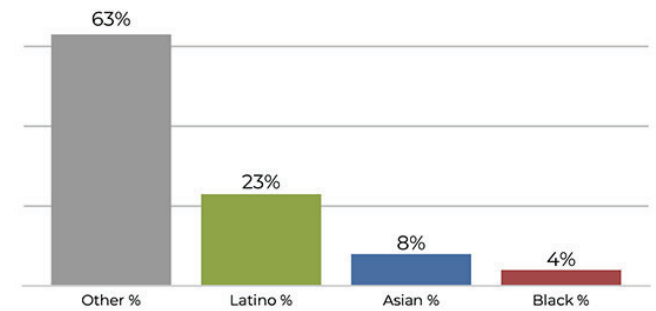
District 2



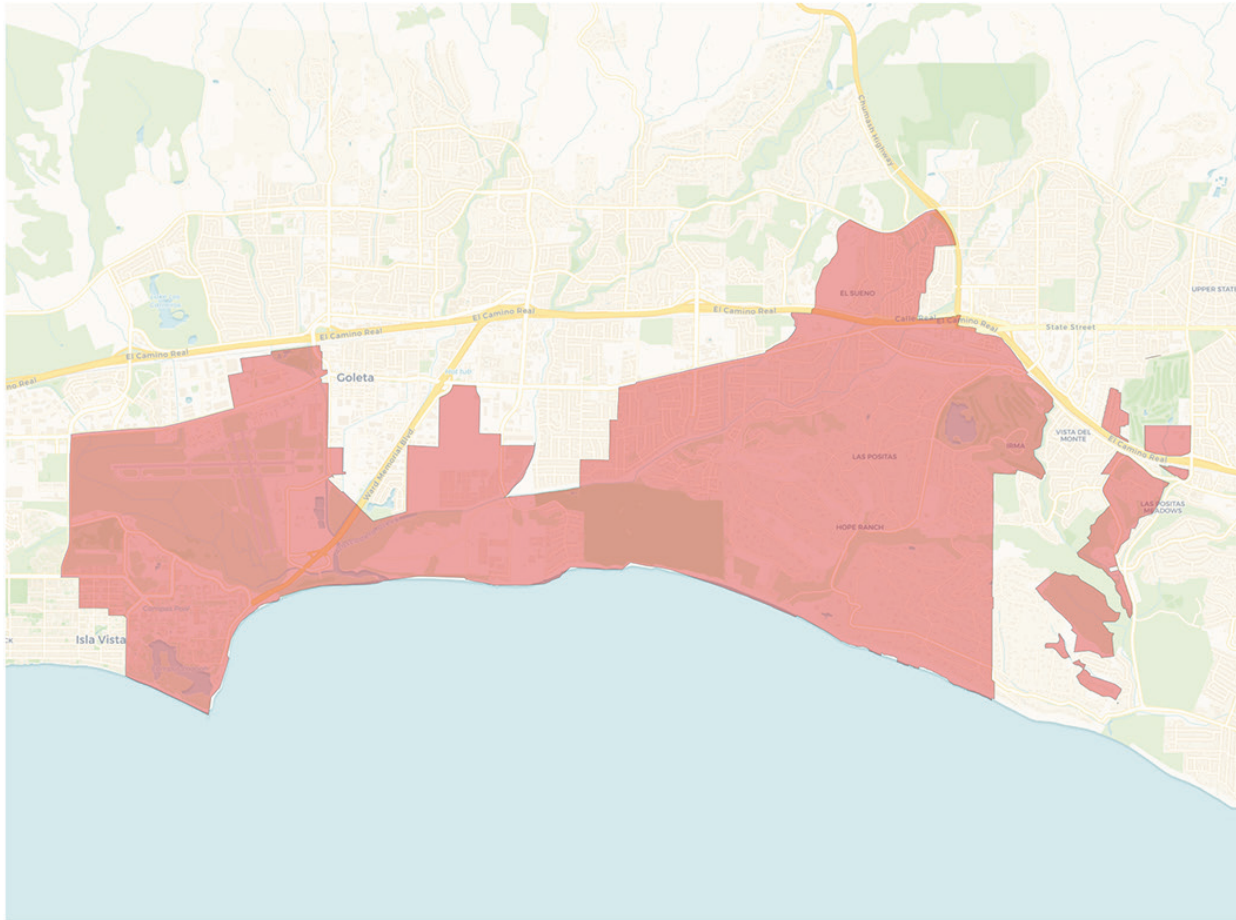
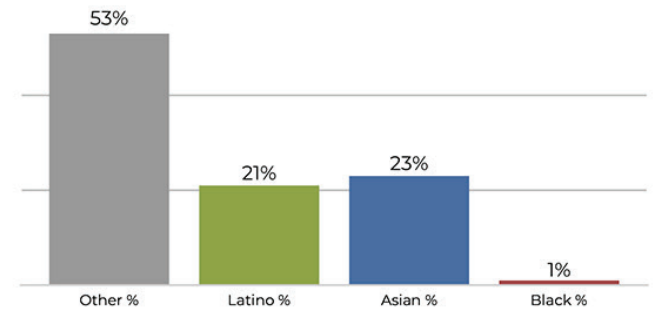
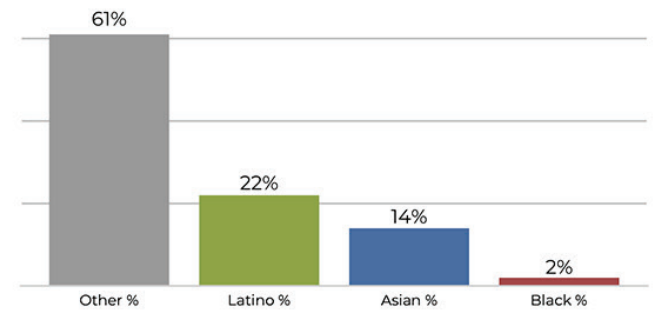
2020 Census



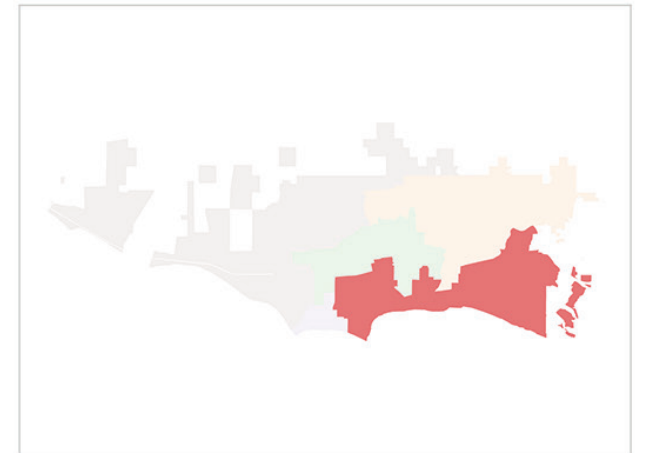
Citizen Voting Age Population

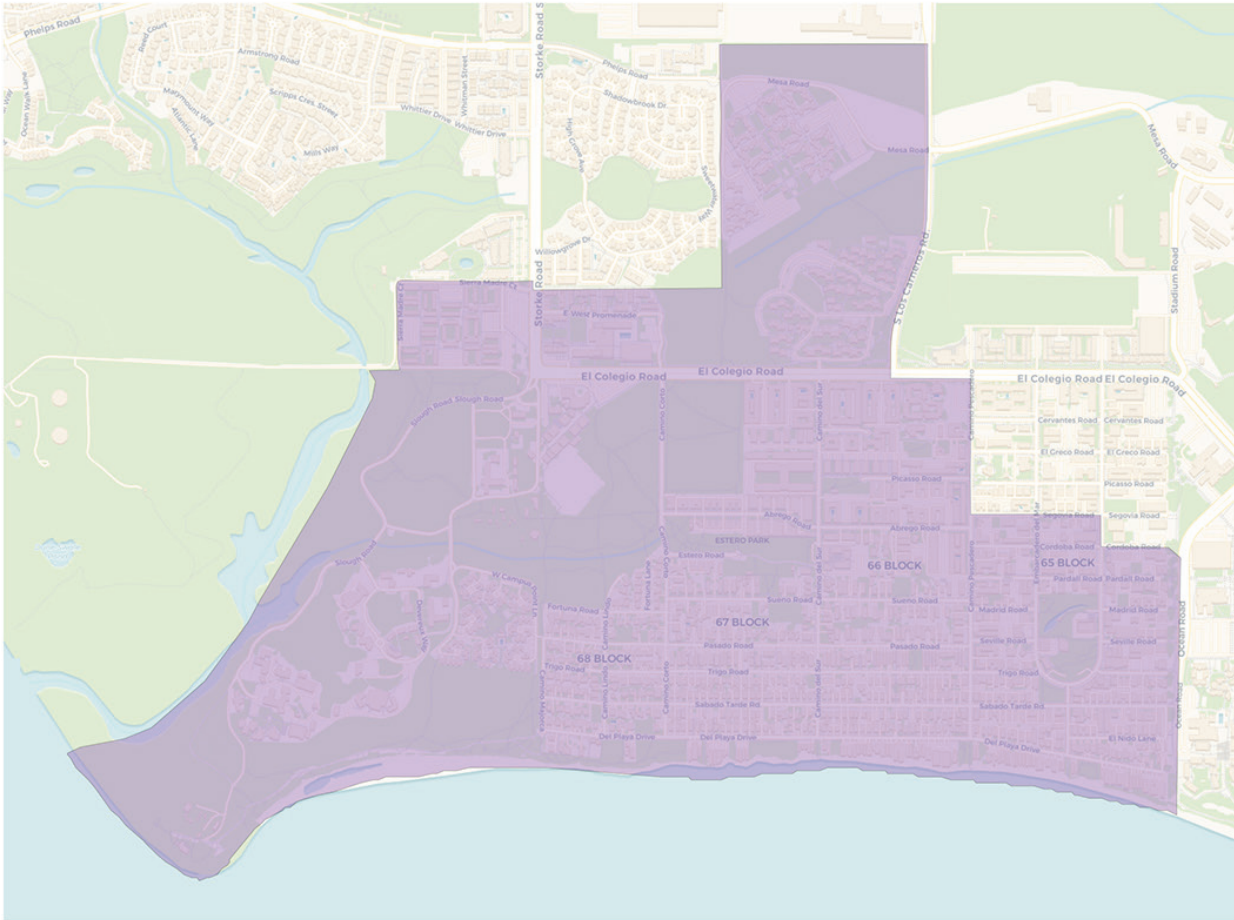
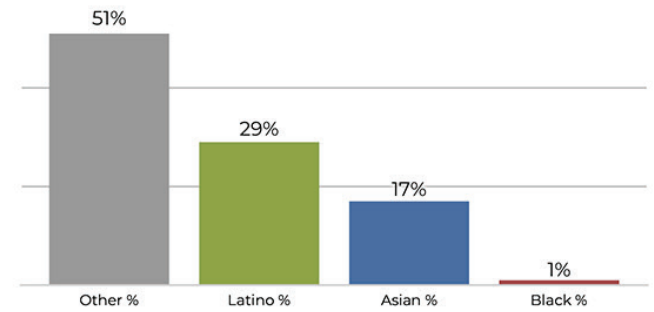
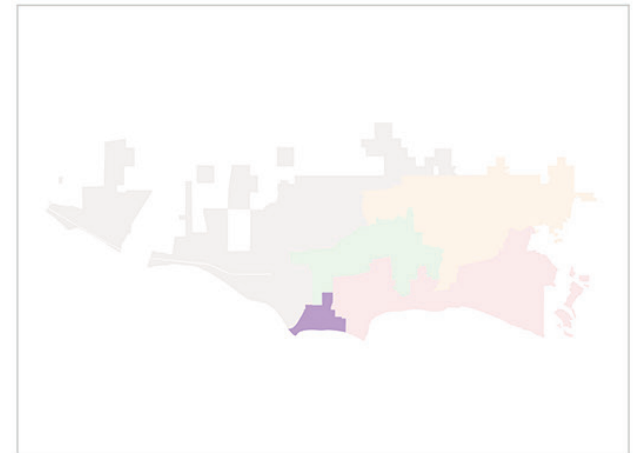
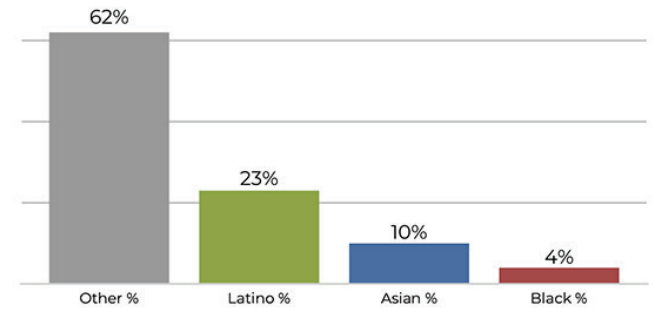


Population	Deviation	Deviation %	Other	Other %	Latino	Latino %	Asian	Asian %	Black	Black %
17,140	-737	-4.1%	8,871	51.8%	5,925	34.6%	2,101	12.3%	243	1.4%
Total CVAP	Other CVAP	Other CVAP %	Latino CVAP	Latino CVAP %	Asian CVAP	Asian CVAP %	Black CVAP	Black CVAP %		
10,510	6,719	63.9%	2,413	23.0%	919	8.7%	459	4.4%		

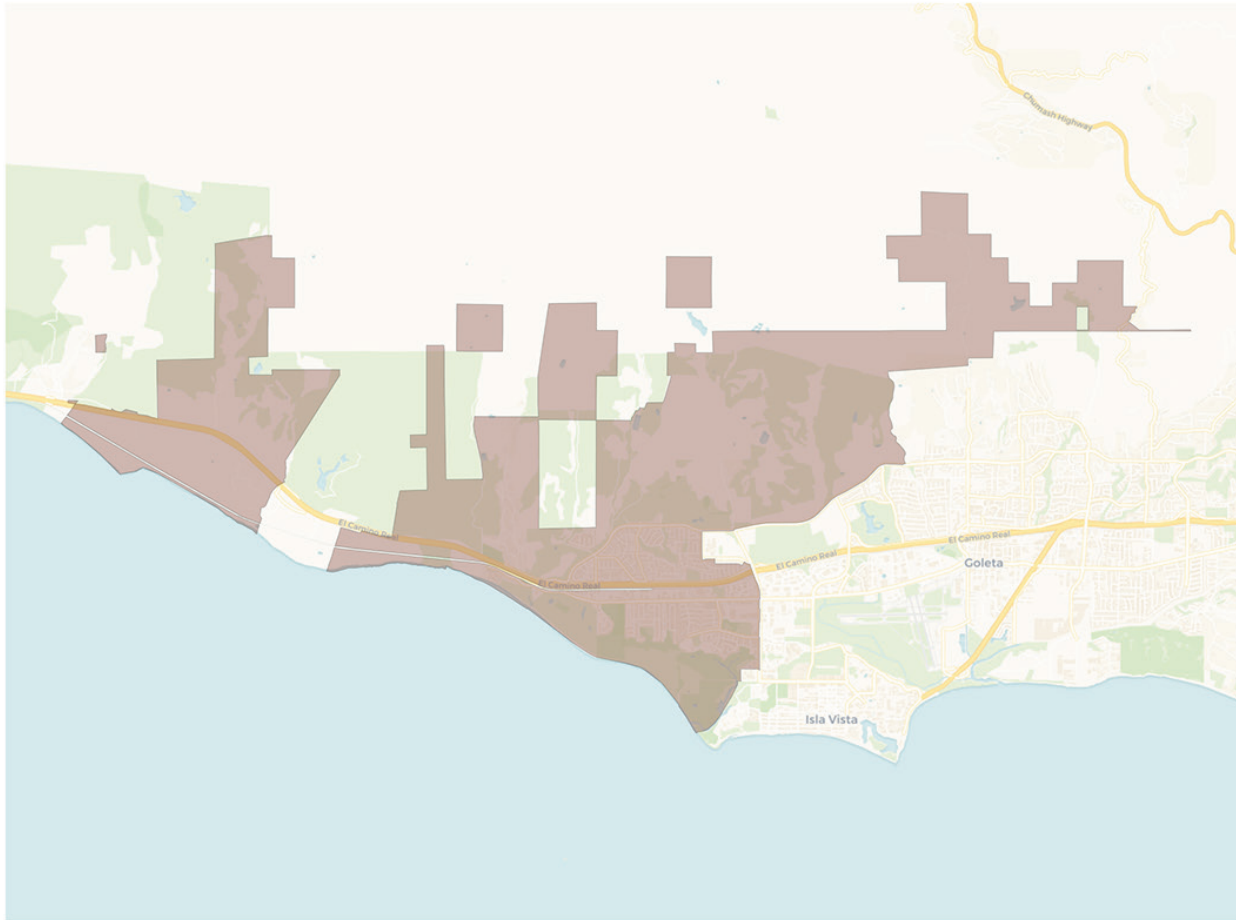
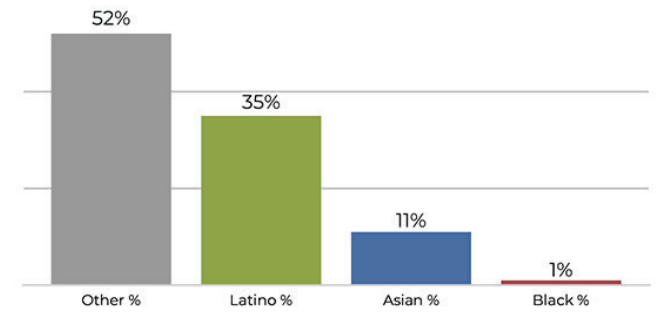
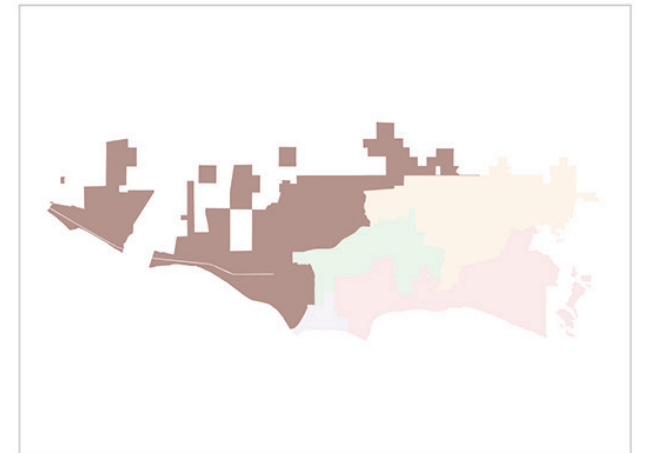
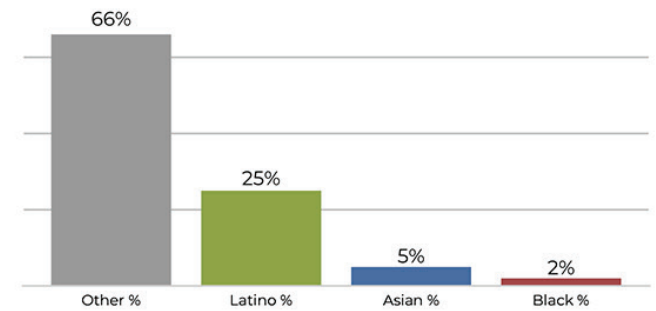
District 3

2020 Census

Citizen Voting Age Population


Population	Deviation	Deviation %	Other	Other %	Latino	Latino %	Asian	Asian %	Black	Black %
18,571	694	3.9%	9,989	53.8%	4,054	21.8%	4,310	23.2%	218	1.2%
Total CVAP	Other CVAP	Other CVAP %	Latino CVAP	Latino CVAP %	Asian CVAP	Asian CVAP %	Black CVAP	Black CVAP %		
15,493	9,583	61.9%	3,423	22.1%	2,182	14.1%	305	2.0%		



District 4

2020 Census

Citizen Voting Age Population


Population	Deviation	Deviation %	Other	Other %	Latino	Latino %	Asian	Asian %	Black	Black %
18,006	129	0.7%	9,304	51.7%	5,308	29.5%	3,090	17.2%	304	1.7%
Total CVAP	Other CVAP	Other CVAP %	Latino CVAP	Latino CVAP %	Asian CVAP	Asian CVAP %	Black CVAP	Black CVAP %		
15,562	9,665	62.1%	3,591	23.1%	1,616	10.4%	690	4.4%		

District 5

2020 Census

Citizen Voting Age Population


Population	Deviation	Deviation %	Other	Other %	Latino	Latino %	Asian	Asian %	Black	Black %
17,279	-598	-3.3%	9,060	52.4%	6,055	35.0%	1,908	11.0%	256	1.5%
Total CVAP	Other CVAP	Other CVAP %	Latino CVAP	Latino CVAP %	Asian CVAP	Asian CVAP %	Black CVAP	Black CVAP %		
11,142	7,352	66.0%	2,881	25.9%	636	5.7%	273	2.5%		