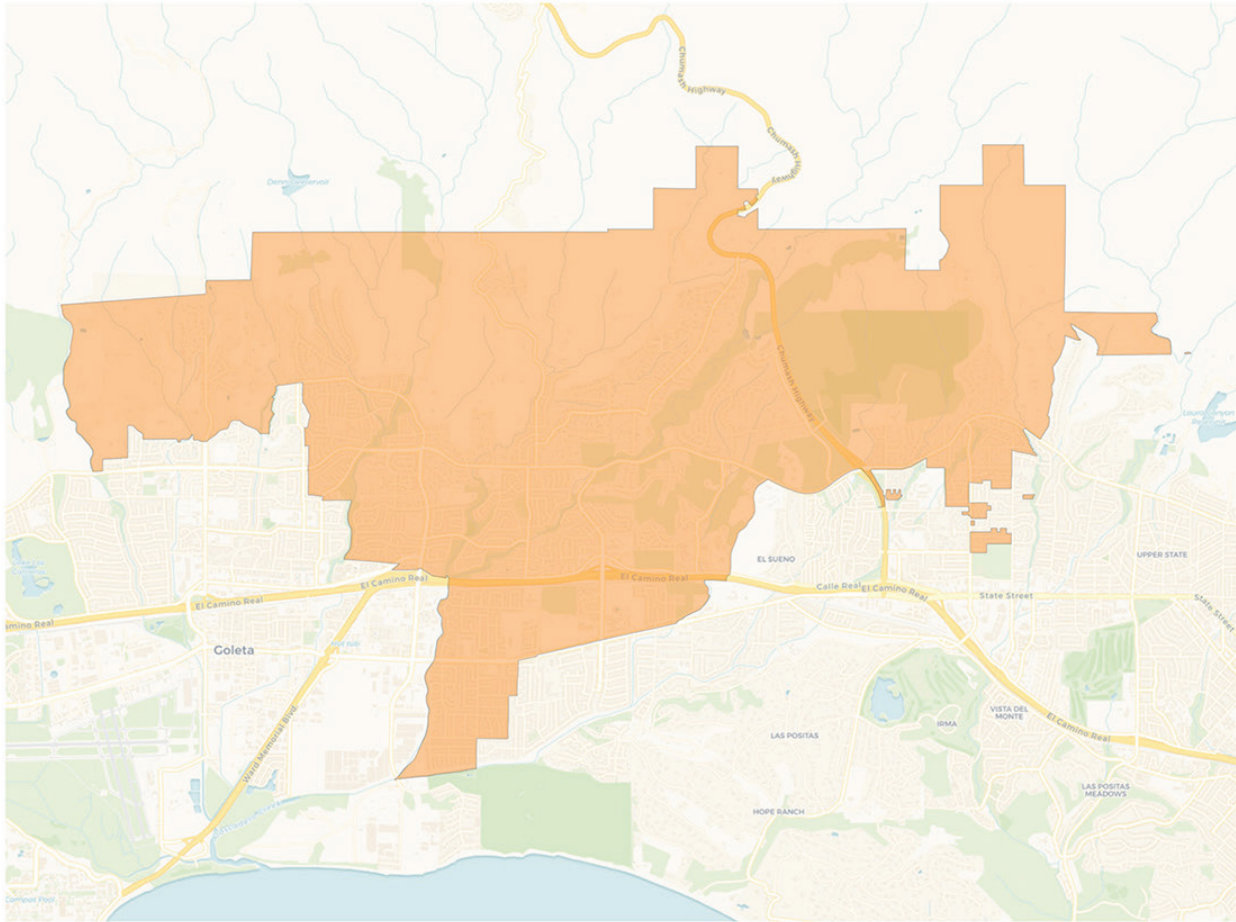
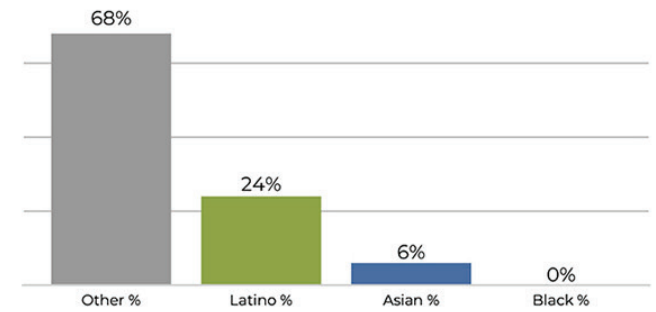
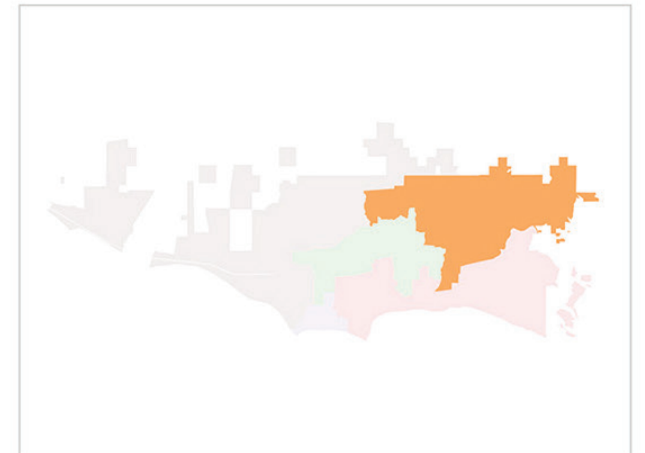
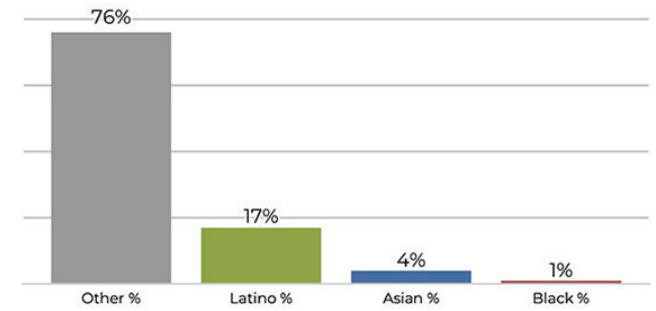


District 1

2020 Census

Citizen Voting Age Population


Population	Deviation	Deviation %	Other	Other %	Latino	Latino %	Asian	Asian %	Black	Black %
18,391	514	2.9%	12,561	68.3%	4,471	24.3%	1,223	6.6%	136	0.7%
Total CVAP	Other CVAP	Other CVAP %	Latino CVAP	Latino CVAP %	Asian CVAP	Asian CVAP %	Black CVAP	Black CVAP %		
13,968	10,657	76.3%	2,458	17.6%	616	4.4%	237	1.7%		