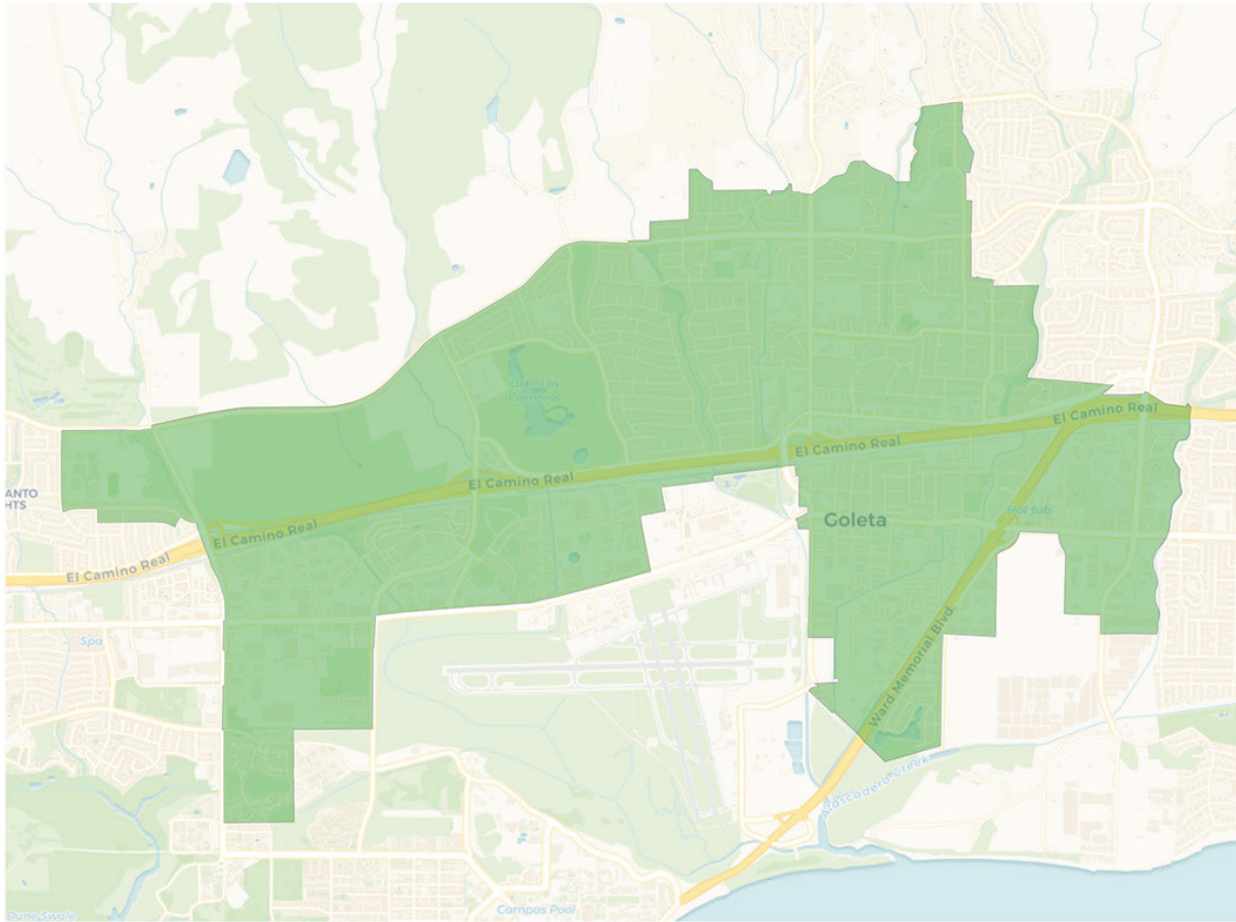
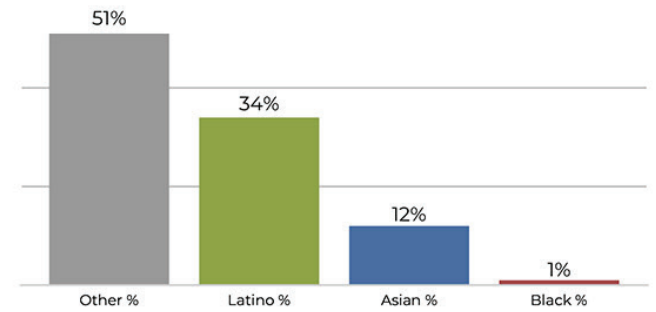


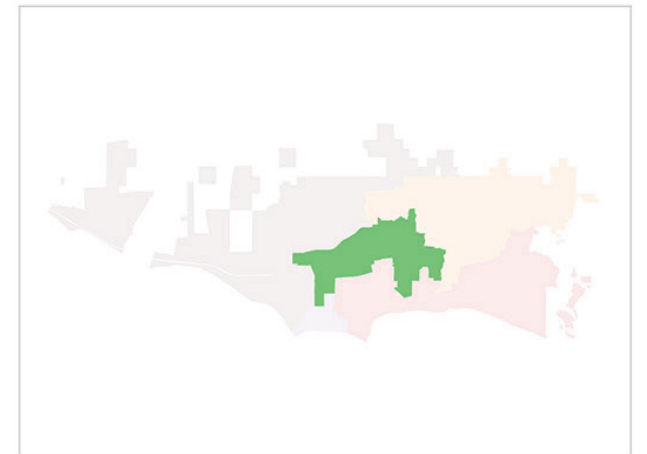
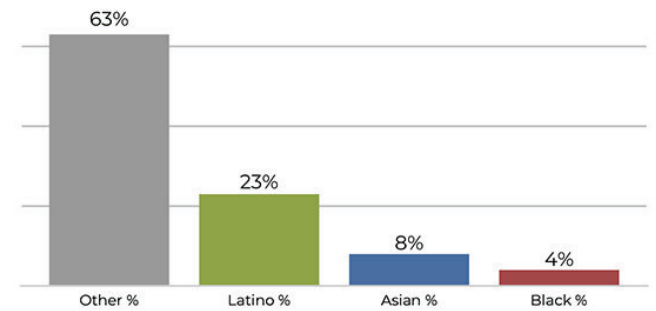
District 2



2020 Census



Citizen Voting Age Population



Population	Deviation	Deviation %	Other	Other %	Latino	Latino %	Asian	Asian %	Black	Black %
17,140	-737	-4.1%	8,871	51.8%	5,925	34.6%	2,101	12.3%	243	1.4%
Total CVAP	Other CVAP	Other CVAP %	Latino CVAP	Latino CVAP %	Asian CVAP	Asian CVAP %	Black CVAP	Black CVAP %		
10,510	6,719	63.9%	2,413	23.0%	919	8.7%	459	4.4%		